

# NobelProcera™ Optical Scanner

Our investment in the new NobelProcera™ Optical Scanner means great new advantages for your practice!

## Impression scanning capability with patented conoscopic holography

- Higher accuracy (fewer variables)
- Better communication between dentist and technician

## Improved, best-in-class precision fit

- Production accuracy < 10 µm
- Internal fit < 40 µm

## New restorative option

A variety of custom milled titanium overdenture bar solutions

- Strong
- Precise, passive fit
- Wide assortment of retention elements

## Why NobelProcera?

- Comprehensive CAD/CAM dental prosthetics for all indications

On natural teeth  
On implants and abutments

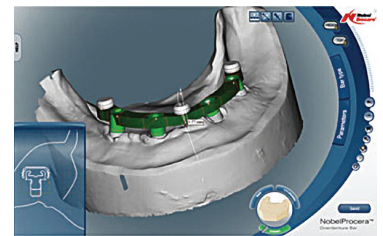
- The widest assortment of implant platforms available anywhere for your implant bar, custom abutment and NobelProcera Implant Bridge Solutions
- Excellent materials and production for best precision of fit and quality

Zirconia (ZrO<sub>2</sub>): 1120 MPa average flexural strength

Alumina (Al<sub>2</sub>O<sub>3</sub>): 600–700 MPa flexural strength

Titanium: 345 MPa and 860 MPa tensile strength; the widest assortment of implant platforms available anywhere for your custom abutments and NobelProcera Implant Bridges

- Zirconia options are available in 4 shades
- 15 years of clinical experience and research with dental CAD/CAM
- State-of-the-art ISO Certified and FDA inspected production centers



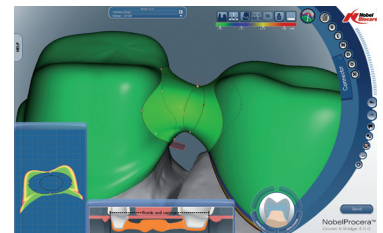
### Overdenture bar

A wide range of fixed and removable overdenture bar types available.



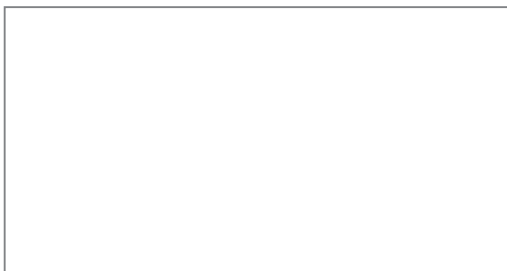
### Abutment design freedom

Optimal soft tissue adaptation.



### Bridge connectors

Connector design tool for optimized esthetics and strength.



In order to improve readability, Nobel Biocare doesn't use TM/® in the running text. By doing so, however, Nobel Biocare does not waive any right to the trademark or registered mark and nothing herein shall be construed to the contrary.

Nobel Biocare USA, LLC. 22715 Savi Ranch Parkway, Yorba Linda, CA 92887  
Phone: 714-282-4800 • Toll Free: 800-322-5001 • Tech Support: 888-725-7100

©2009 Nobel Biocare USA, LLC. All rights reserved. www.nobelbiocare.com MKT-2027 Rev. 00 (05/09)

[www.nobelbiocare.com/nobelprocera](http://www.nobelbiocare.com/nobelprocera)

